

# GENERAL NOTES

## SUSTAINABILITY

- Particleboard and MDF fabricated from recycled wood waste material
- Cardboard packaging made from recycled materials
- Unusable pallets are recycled
- All aluminum scrap is recycled
- All adhesives used are water-based
- Products meet low VOC standards
- Powder coat paint is used on all metal surfaces
- Greenguard Gold Certified to provide safe, quality, environmentally friendly workspaces.
- FSC and OSHPD certified components are also available

## CONSTRUCTION

- Cabinets are constructed of 3/4" thick industrial grade 40-50lb substrate, double-faced melamine
- All exposed edges are covered with 2mm PVC edge banding
- All panels are connected with hafele mini-fix cam hidden fastener system
- All cabinets are rail mounted for ease of install
- Work surfaces are constructed of 1 1/16" thick high-pressure laminate

## MODULAR CASEWORK ROOM SEGMENTS

Copyright 2017 Southwest Solutions Group. This material is proprietary and confidential and the disclosure, reproduction (by photocopy, film, blueprint or otherwise) or incorporation into any information retrieval system without first receiving written approval from Southwest Solutions Group is expressly prohibited by law.

Approved By

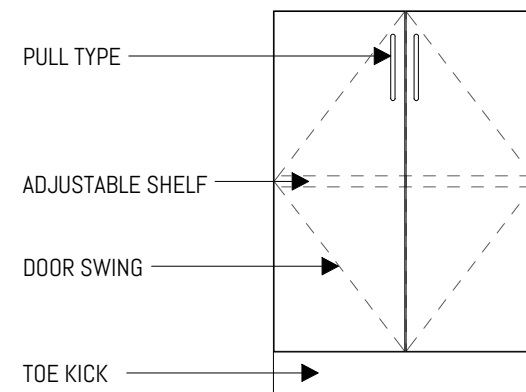
Date

Drawn by DHaynal

Salesperson SSG

Scale 1/2" = 1'-0"

# LEGEND



## FOR MORE INFORMATION

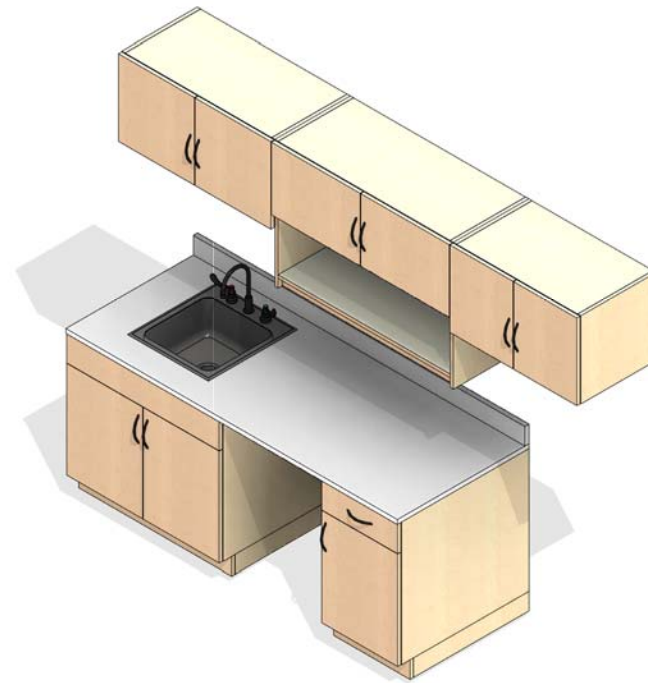
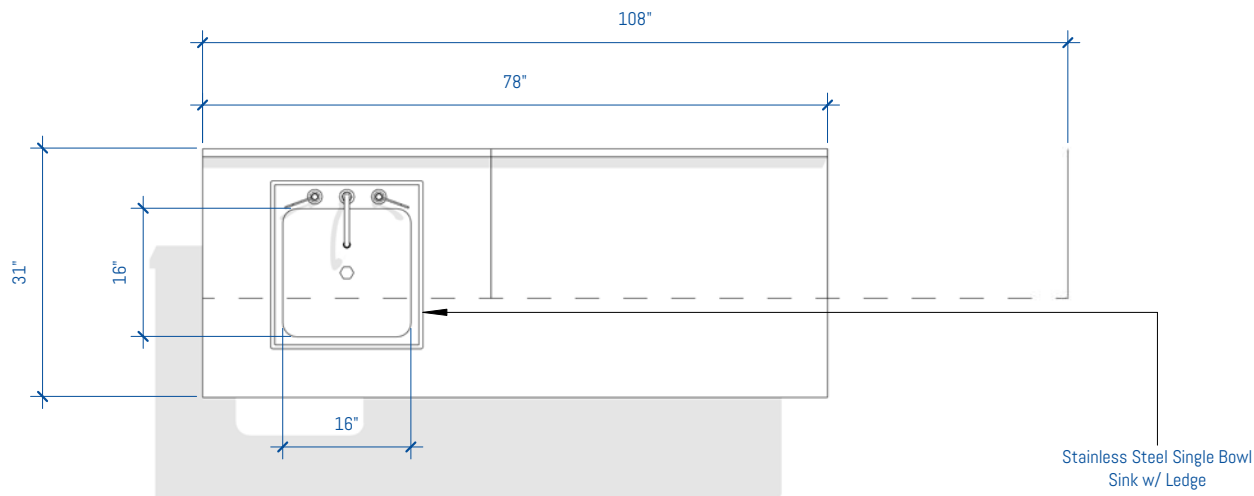
<https://bim.southwestsolutions.com>

RN	DATE	DESCRIPTION
<b>SSG REVISION SCHEDULE</b>		

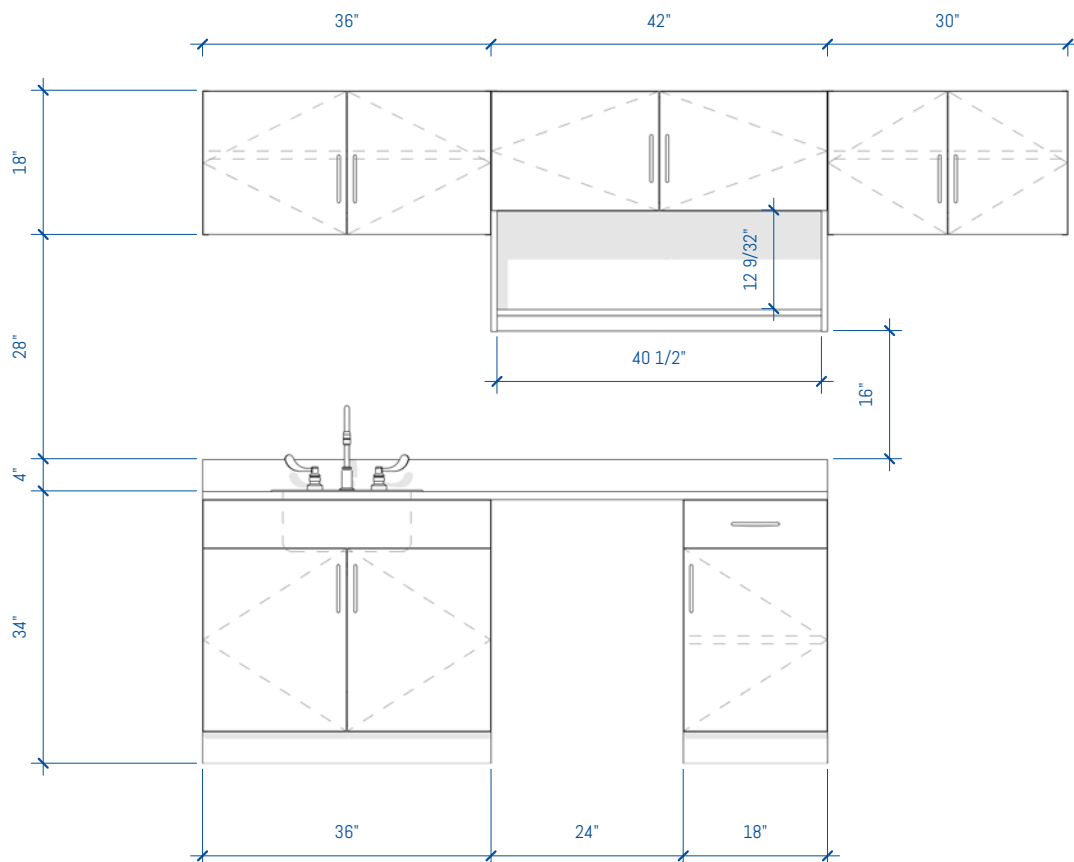
## BREAK ROOM - LAM 9ft - OPTION 7

SHEET NUMBER

BR-23 of BR-30

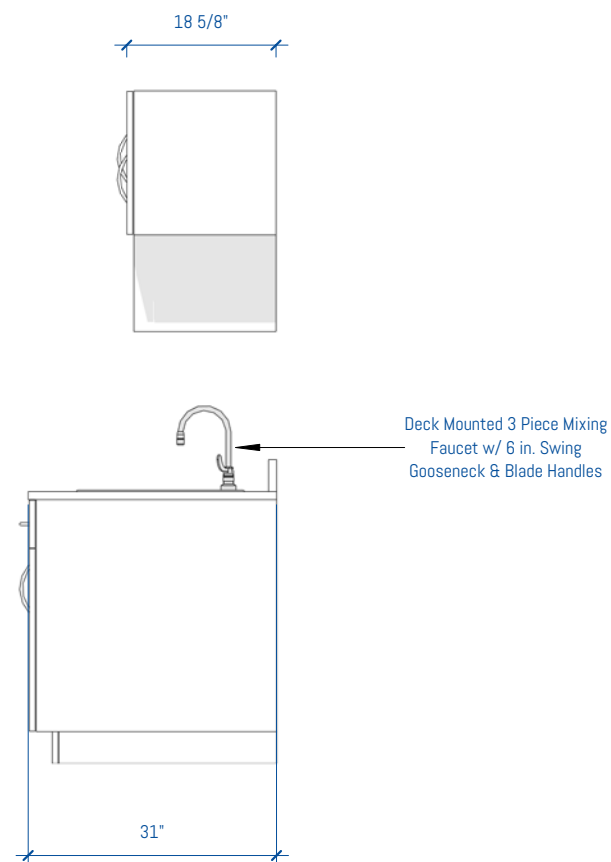


4 BREAK ROOM - LAM 9ft - OPTION 7  
1/2" = 1'-0"



2 BREAKROOM - LAM 9ft - OPTION 7 - FRONT  
1/2" = 1'-0"

3 BREAK ROOM - LAM 9ft - OPTION 7



1 BREAKROOM - LAM 9ft - OPTION 7 - SIDE  
1/2" = 1'-0"