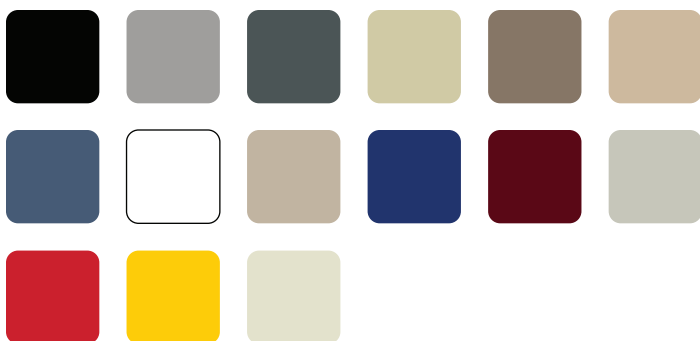


AVAILABLE IN THESE FINISHES



Description

4-Post units with rolling shelves are perfect for archival storage of docket books, deed records, and other large-format book storage. Rolling shelf inserts make it easy to slide books with either 3" or 5" clear spacing between shelves. Optional backstops can make this unit single-sided or accessible from both sides.

SPECIFICATION GUIDE

Roller Shelves 4 Post Shelving

- Use this family where large-format book storage is desired such as municipality records storage, county plat records, or court dockets
- Rolling shelf inserts fixed at either 3 1/4" or 5 1/4" clear spacing able to accommodate books up to 3 1/8" and 5 1/8" respectively
- Includes one unslotted standard duty shelf (top of unit), two closed "L" uprights, up to seventy-six rolling shelf inserts, up to thirty-eight 42" heavy duty shelf supports, and two 2" tall kick plates

Classification

MASTERFORMAT	UNIFORMAT	OMNICLASS
10 56 13	E20	23.40.20.27

Standard sizes

MODEL	WIDTH	DEPTH	HEIGHT	WEIGHT
SMS-75- RS421576-16	42"	15"	76 1/4"	302
SMS-75- RS421576-12	42"	15"	76 1/4"	204
SMS-75- RS421588-19	42"	15"	88 1/4"	354
SMS-75- RS421588-14	42"	15"	88 1/4"	276
SMS-75- RS421876-16	42"	18"	76 1/4"	309
SMS-75- RS421876-12	42"	18"	76 1/4"	249

Standard sizes

MODEL	WIDTH	DEPTH	HEIGHT	WEIGHT
SMS-75- RS421888-19	42"	18"	88 1/4"	363
SMS-75- RS421888-14	42"	18"	88 1/4"	287
SMS-75- RS423076-16	42"	30"	76 1/4"	403
SMS-75- RS423076-12	42"	30"	76 1/4"	379
SMS-75- RS423088-19	42"	30"	88 1/4"	556
SMS-75- RS423088-14	42"	30"	88 1/4"	435
SMS-75- RS423676-16	42"	36"	76 1/4"	488
SMS-75- RS423676-12	42"	36"	76 1/4"	396
SMS-75- RS423688-19	42"	36"	88 1/4"	569
SMS-75- RS423688-14	42"	36"	88 1/4"	452